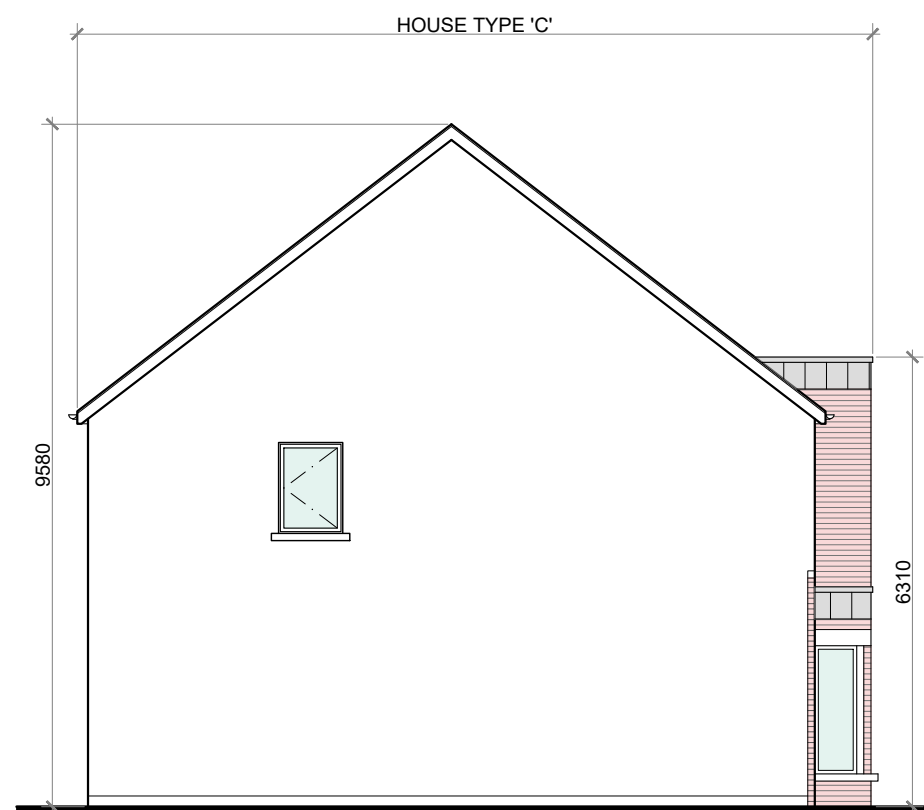
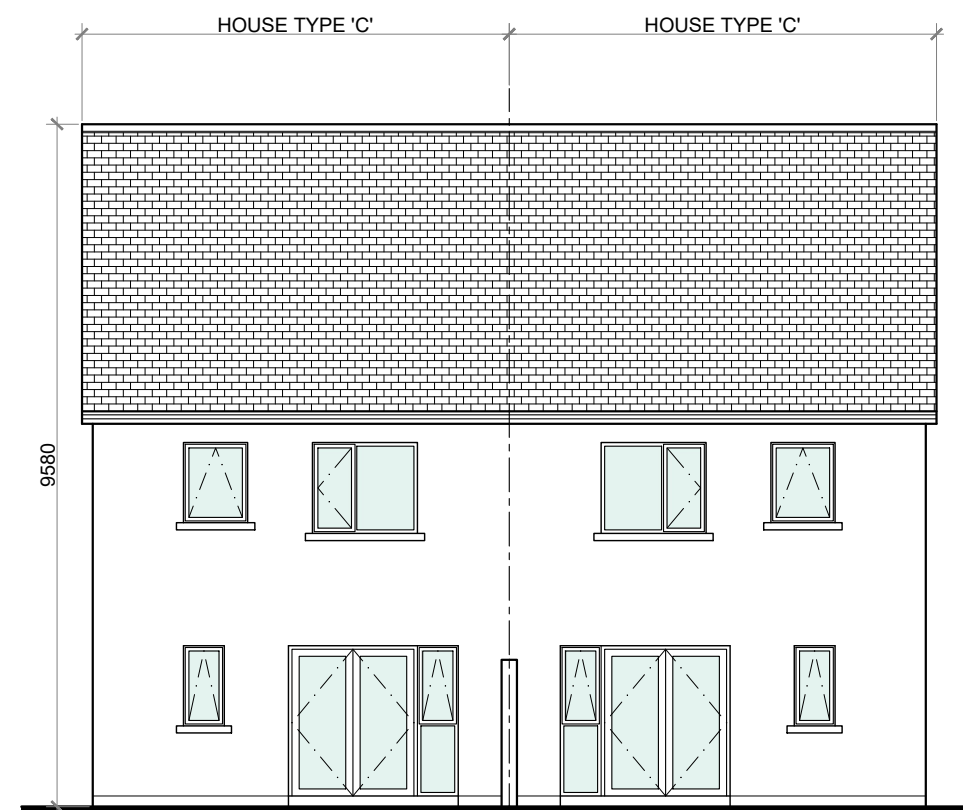


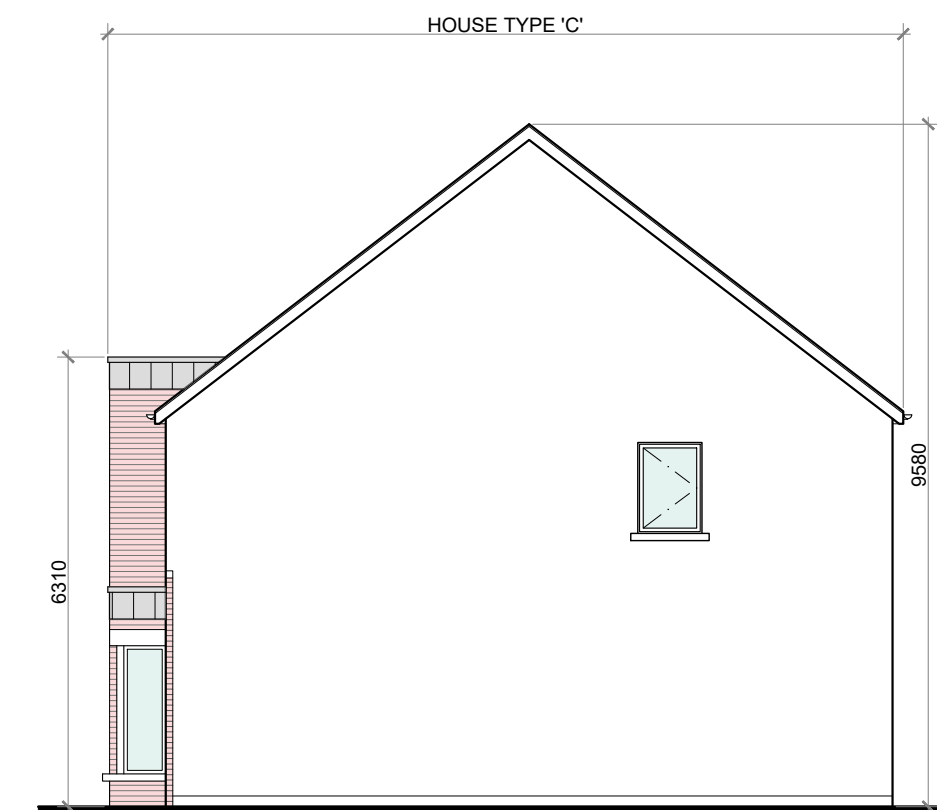
FRONT ELEVATION @ 1:100  
TYPE 'C'



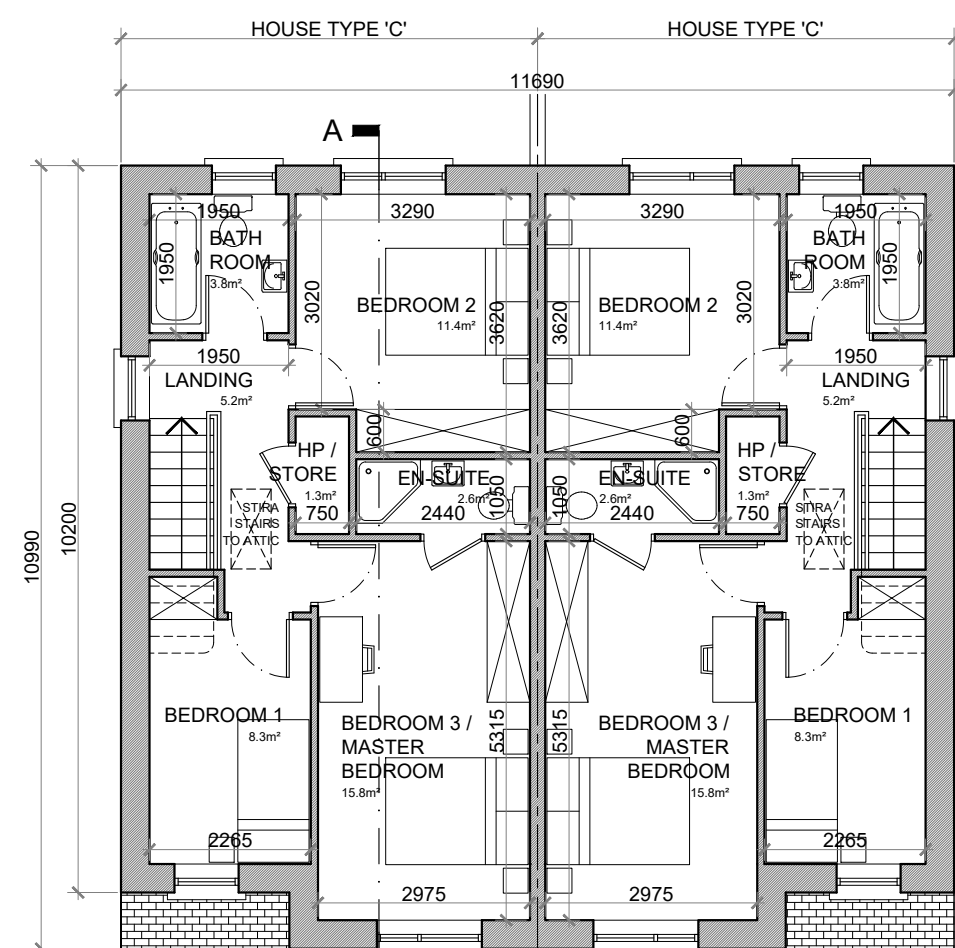
SIDE ELEVATION @ 1:100  
TYPE 'C'



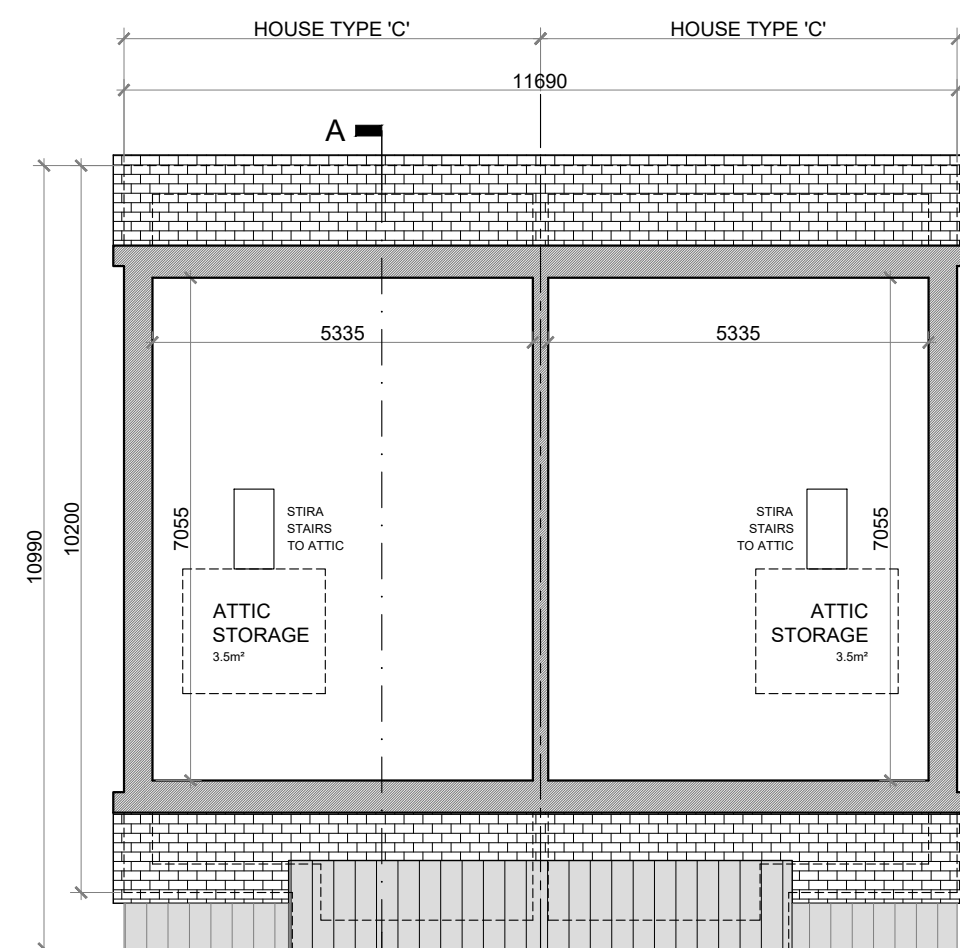
REAR ELEVATION @ 1:100  
TYPE 'C'



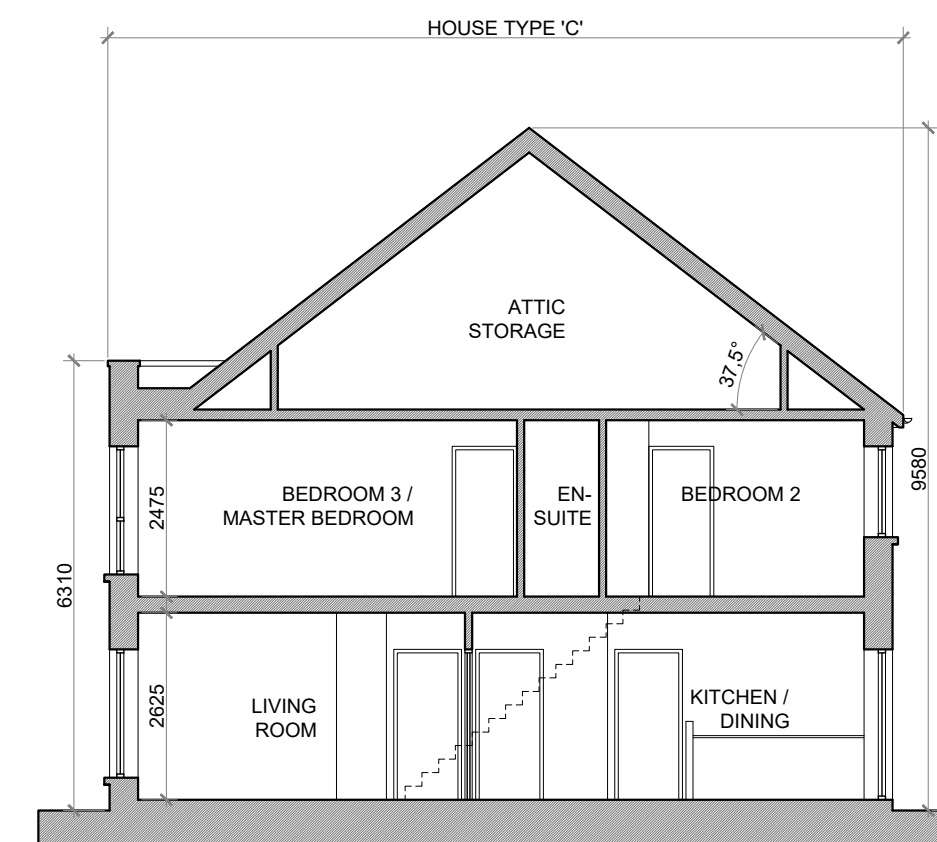
SIDE ELEVATION @ 1:100  
TYPE 'C'



FIRST FLOOR PLAN @ 1:100  
TYPE 'C'



ATTIC STORAGE PLAN @ 1:100  
TYPE 'C'



SECTION A-A @ 1:100  
TYPE 'C'

#### PROPOSED FINISHES:

SLATE / TILED FINISH TO ROOF  
WITH STANDING SEAM ZINC CLAD  
FINISH (OR SIMILAR APPROVED)  
TO FLAT ROOF AREAS &  
ENTRANCE CANOPIES AS  
INDICATED.

UPVC / ALUMINIUM FINISH TO  
FASCIAS, GUTTERS AND  
DOWNPIPES.

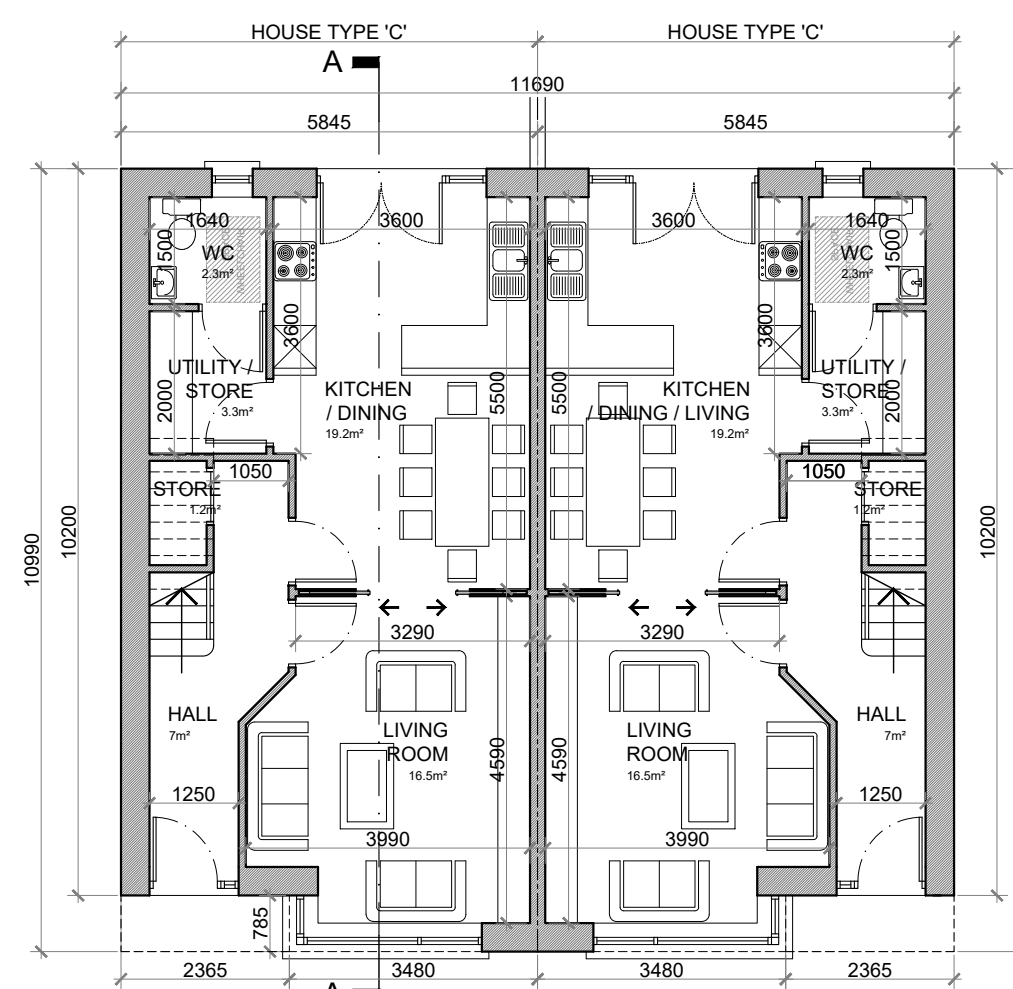
SELECTED BRICK FINISH TO  
AREAS AS INDICATED.

PLASTER / RENDER FINISH TO  
WALLS AS INDICATED.

UPVC / ALUMINIUM / TIMBER FINISH  
TO WINDOWS AND DOORS.

PAINTED CONCRETE / STONE  
SILLS AND CAPPINGS.

PLASTER / RENDER FINISH TO  
PLINTH.



GROUND FLOOR PLAN @ 1:100  
TYPE 'C'

3 BED TERRACE HOUSE TYPE 'C':  
GROUND FLOOR AREA: 52.5 SQ.M. (565 SQ.FT.)  
FIRST FLOOR AREA: 52.5 SQ.M. (565 SQ.FT.)  
TOTAL FLOOR AREA: 105.0 SQ.M. (1,130 SQ.FT.)

#### HOUSE TYPE 'C':

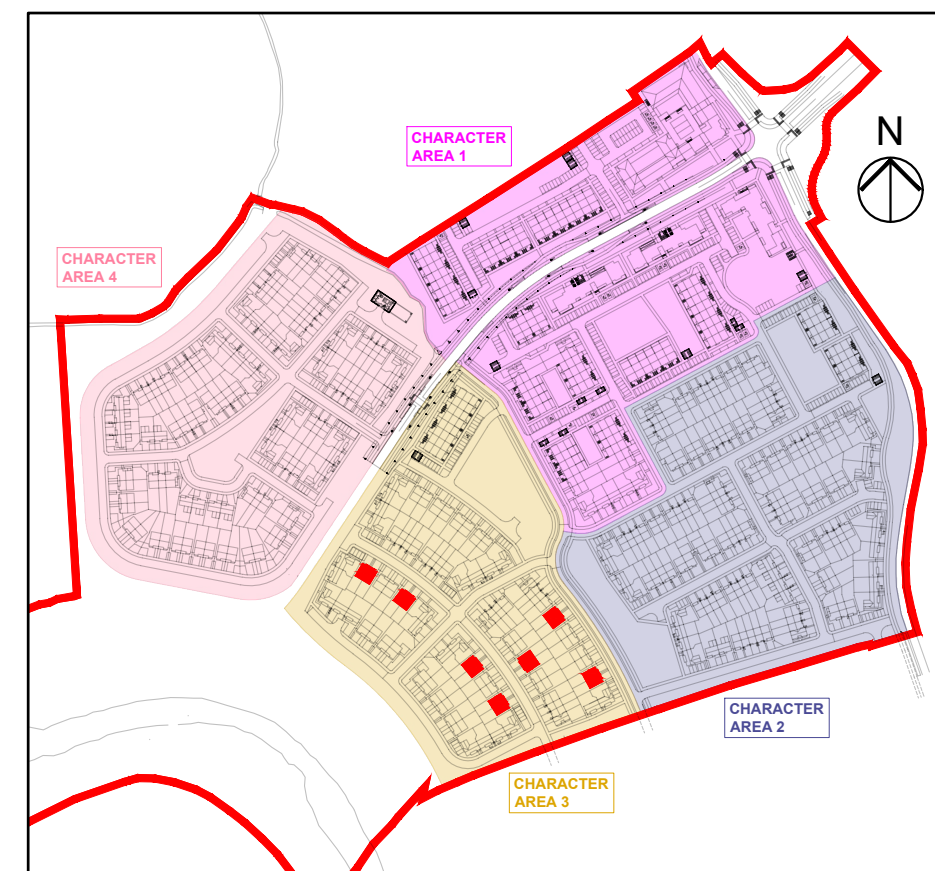
##### 3 BED SEMI-DETACHED—5 PERSON

##### FLOOR AREA / ROOM WIDTH REQUIREMENTS\*:

AREAS:	PROVIDED:	MIN. REQUIRED:
MAIN LIVING ROOM	16.5 M <sup>2</sup>	13 M <sup>2</sup>
BEDROOM 1	8.3 M <sup>2</sup>	7.1 M <sup>2</sup>
BEDROOM 2	11.4 M <sup>2</sup>	11.4 M <sup>2</sup>
BEDROOM 3 (MAIN)	15.8 M <sup>2</sup>	13 M <sup>2</sup>
AGGREGATE LIVING	35.7 M <sup>2</sup>	34 M <sup>2</sup>
AGGREGATE BEDROOM	35.5 M <sup>2</sup>	32 M <sup>2</sup>
GROSS STORAGE	9.3 M <sup>2</sup>	5 M <sup>2</sup> (RCC 8 M <sup>2</sup> )
GROSS FLOOR SPACE	105.0 M <sup>2</sup>	92 M <sup>2</sup> (RCC 100 M <sup>2</sup> )

WIDTHS:	PROVIDED:	MIN. REQUIRED:
LIVING ROOM	3.99 M	3.8 M
BEDROOM 1 (SINGLE)	2.27 M	2.1 M
BEDROOM 2 (DOUBLE)	3.02 M	2.8 M
BEDROOM 3 (DOUBLE)	2.98 M	2.8 M

\*FIGURES TAKEN FROM *QUALITY HOUSING FOR SUSTAINABLE COMMUNITIES* PUBLISHED BY THE D&EHLG.



KEY PLAN

### SEMI-DETACHED HOUSE TYPE C—CHARACTER AREA 3

#### NOTES:

DO NOT SCALE, USE ONLY FIGURED DIMENSIONS WHICH SHOULD BE CHECKED ON SITE BEFORE WORK COMMENCES.

ALL WORK TO BE CARRIED OUT IN ACCORDANCE WITH THE LATEST BUILDING REGULATIONS.

REFER TO STRUCTURAL ENGINEER'S DRAWINGS AND SPECIFICATION FOR ALL STRUCTURAL WORK.

THIS DRAWING IS COPYRIGHT.

NO.:	REVISIONS:	DATE:	H	DATE:
A			I	
B			J	
C			K	
D			L	
E			M	
F			N	
G			O	

#### LEGEND:

REFER TO THE SITE LAYOUT DRAWING FOR THE ORIENTATION AND FLOOR LEVELS FOR EACH DWELLING .

#### OFA

O'LYNN ARCHITECTS,  
LOWER EYRE STREET,  
NEWBRIDGE,  
CO. KILDARE.  
TEL.: 045 433400  
EMAIL: info@oflynnarchitects.ie  
WEB: www.oflynnarchitects.ie

RIAI  
2021

PROJECT: PROPOSED GREAT CONNELL SHD AT NEWBRIDGE, CO. KILDARE.

TITLE: PROPOSED PLANS, ELEVATIONS & SECTIONS FOR SEMI-DETACHED HOUSE TYPE 'C'—CHARACTER AREA 3.

CLIENT: ASTON LTD.

STAGE: PLANNING

PROJECT NO.: 19070

DRG. NO.: PA-038

SCALE: 1:100  
DATE: MARCH 2022

DRAWN: POF  
CHECKED: POF